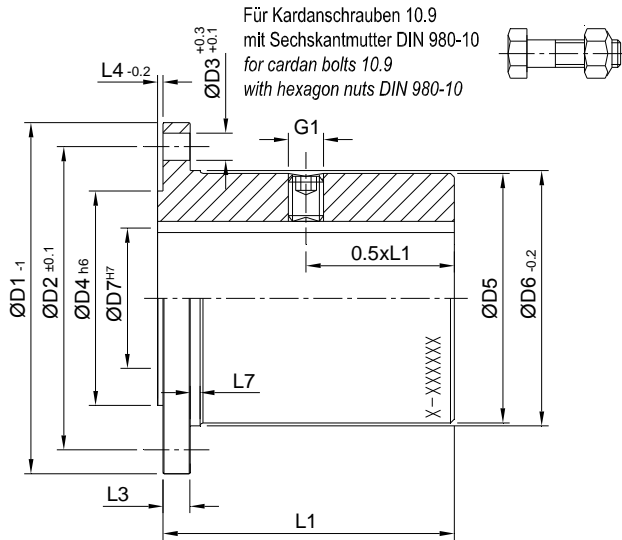


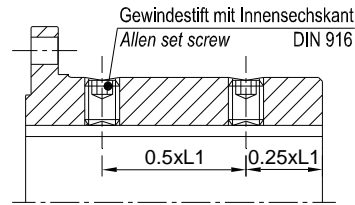


DIN Standard

Version A



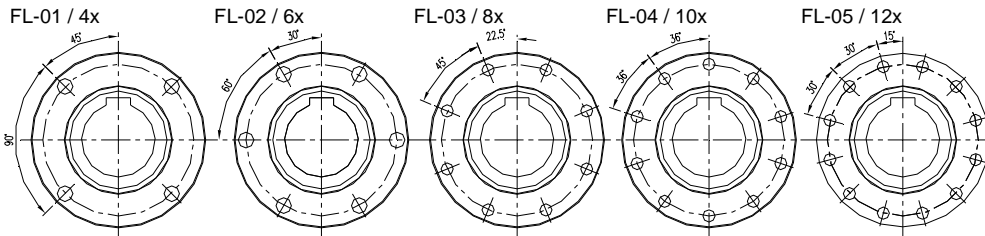
Version B



XXXXXX-X
ID Markierung einschließlich aller Kunden ID Daten
ID marking including all customer data

Material: C45

Alle Anschlussflansche einschließlich Gewindestifte
All companion flanges including Allen key screws



* = meist gebrauchte Länge L1 most used length L1
*** = Baugröße size 114: M10x1x35mm

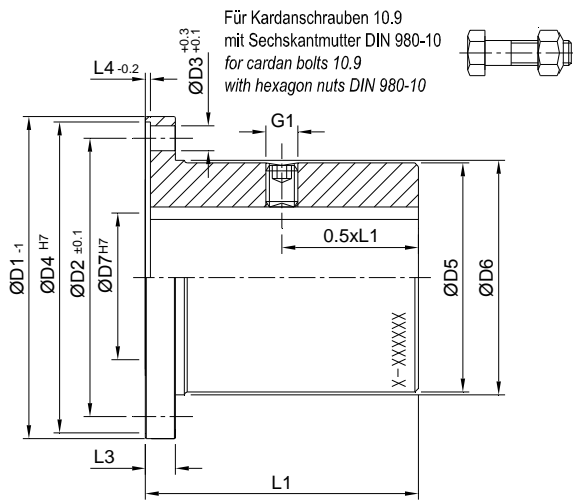
** = Details Nabe + G1 siehe Seite 44-45 details sleeve + G1 see page 44-45

ØD1 mm	L1 mm	L1* mm	ØD7** mm	ØD2 mm	ØD4 mm	L3 mm	L4 mm	L7 mm	ØD5 mm	ØD6 mm	Ver sion	ØD3 mm	Flansch flange	Schrauben bolts	
														Maß size	Mt Nm
58	20-50	30	10-22	47	30	4	1.4	3	38	38.8	A	Ø5	FL-01 (4)	M5x15	9
		30	23-24											B	
65	20-60	40	10-22	52	35	5	1.6	3	40	41.8	A	Ø6	FL-01 (4)	M6x20	14
		40	23-26											B	
75	20-70	42	10-30	62	42	6	1.9	3	50	51.8	A	Ø6	FL-02 (6)	M6x20	14
		48	31-34											B	
90	25-75	50	10-38	74.5	47	8	2.3	3	59	61.2	A	Ø8	FL-01 (4)	M8x1x25	36
		55	39-44											B	
100	25-90	62	20-42	84	57	8	2.3	3	69	70.7	A	Ø8	FL-02 (6)	M8x1x25	36
		62	43-50											B	
120	25-110	70	26-50	101.5	75	10	2.3	5	82	84.1	A	Ø8	FL-03 (8)	M8x1x30	36
		85	51-60											B	Ø10
150	35-150	100	41-65	130	90	12	2.8	5	108 Ø14: 105	110.6 Ø14: 107.8	A	Ø12 Ø14 Ø14	FL-03 (8) FL-04 (10) FL-05 (12)	M10x1x35	70
		115	66-75											B	M12x1.5x45 M14x1.5x50
180	50-180	120	41-90	155.5	110	14	2.8	5	128	131	B	Ø12 Ø14 Ø16	FL-03 (8) FL-04 (10) FL-05 (12)	M12x1.5x45	120
														M14x1.5x45	190
														M16x1.5x50	300
225	60-220	150	50-125	196	140	15	4.5	5	168	171.4	B	Ø16	FL-03 (8) FL-05 (12)	M12x1.5x50 M16x1.5x50	120 300
250	70-250	170	50-130	218	140	18	5	7	186	190	B	Ø18	FL-03 (8)	M18x1.5x60	450
285	80-280	180	60-150	245	175	20	5	7	210	214.5	B	Ø20	FL-03 (8)	M20x1.5x65	620
315	90-310	200	70-162	280	175	22	5	7	244	247.5	B	Ø22	FL-03 (8)	M22x1.5x75	830
350	100-350	250	80-200	310	220	25	6	7	274	277.5	B	Ø22	FL-04 (10)	M22x1.5x75	830
390	120-400	300	90-230	345	250	28	6	7	308	304	B	Ø24	FL-04 (10)	M24x1.5x85	1100
435	140-550	350	100-260	385	280	32	7	7	343	338	B	Ø27	FL-04 (10)	M27x1.5x95	1600

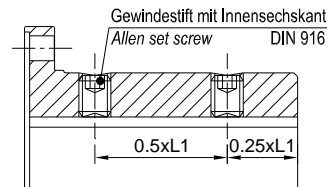


SAE Standard

Version A



Version B

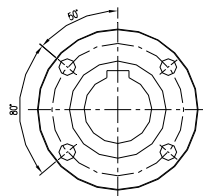


XXXXXX-X
ID Markierung einschließlich aller Kunden ID Daten
ID marking including all customer data

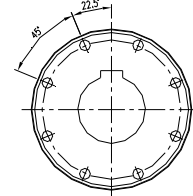
Material: C45

Alle Anschlussflansche einschließlich Gewindestifte
All companion flanges including Allen key screws

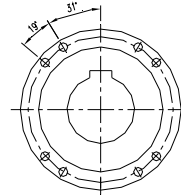
FL-11 / 4x
SAE 1120, 1300, 1400 und 1500,



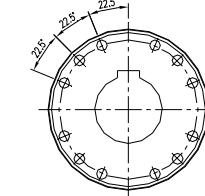
FL-12 / 8x
SAE 1600, 1700 und 1900



FL-13 / 8x
SAE 1880



FL-14 / 12x
SAE 1800



* = meist gebrauchte Länge L1 most used length L1 ** = Details Nabe + G1 siehe Seite 44-45 details sleeve + G1 see page 44-45

ØD1 mm	L1 mm	L1* mm	ØD7** mm	ØD2 mm	ØD4 mm	L3 mm	L4 mm	L7 mm	ØD5 mm	ØD6 mm	Ver sion	ØD3 mm	Flansch flange	Schrauben bolts	
														Maß size	Mt Nm
90 1100	25-75	50 55	10-35 36-40	69.85	57.15	6	2	3	55	56.5	A B	Ø8	FL-11 (4)	M8x1x25 5/16"x1"	36
96 1300	25-90	62 62	20-38 39-44	79.40	60.32	7	2	3	60	62	A B	Ø10 Ø9.5	FL-11 (4)	M10x1x30 3/8"x1 3/16"	70
116 1400	25- 110	70 85	26-50 51-58	95.25	69.85	8	2	3	73	75.8	A B	Ø12 Ø11.2	FL-11 (4)	M12x1.5x40 7/16"x1 5/8"	120
150 1500	35- 150	100 115	41-65 66-72	120.65	95.25	8	2	3	95	98.2	A B	Ø14 Ø12.7	FL-01 (4)	M14x1.5x45 1/2"x1 3/4"	190 120
175 1600	50- 180	120	41- 100	155.52	168.23	10	1.2	5	135	138	B	Ø10 Ø9.5	FL-12 (8)	M10x1x30 3/8"x1 3/16"	70
203 1700 1800	60- 220	150	50- 130	184.15	196.82	11	1.2	5	165	166.7	B	Ø12 Ø11	FL-12 (8) FL-14 (12)	M12x1.5x40 7/16"x1 5/8"	120
245 1880	70- 250	170	50- 150	209.55	177.8	15	1.2	5	182	185.2	B	Ø16	FL-13 (8)	M16x1.5x50	300
250 1900 GS	70- 250	170	50- 170	228.57	196.82	18	1.2	5	206	209	B	Ø12	FL-14 (12)	M12x1.5x50 7/16"x1 5/8"	120
276 1900	80- 280	180	60- 132	247.64 (251.70)	222.22	18	1.2	5	168	171.4	B	Ø16	FL-12 (8)	M16x1.5x60	300