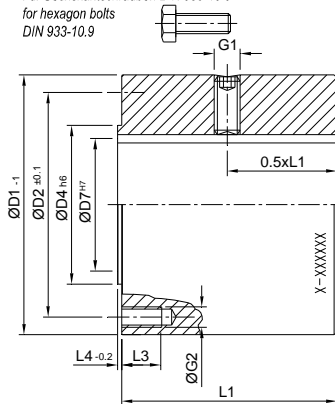




DIN Compact

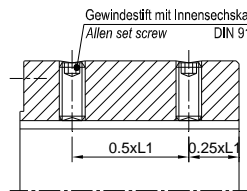
Version A

Für Sechskantschrauben DIN 933-10.9
for hexagon bolts
DIN 933-10.9



Version B

Gewindestift mit Innensechskant
Allen set screw
DIN 916



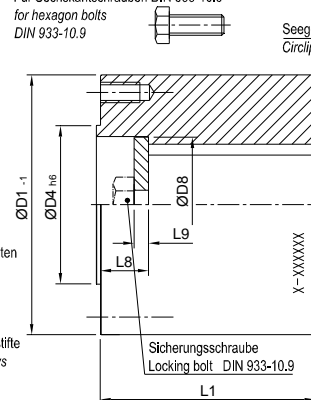
XXXXXX-X
ID Markierung einschließlich aller Kunden ID Daten
ID marking including all customer data

Material: C45

Alle Anschlussflansche einschließlich Gewindestifte
All companion flanges including Allen key screws

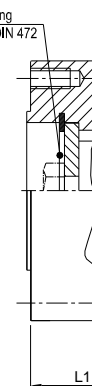
DIN Central

Für Sechskantschrauben DIN 933-10.9
for hexagon bolts
DIN 933-10.9

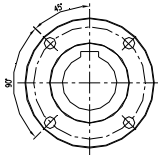


DIN Cap

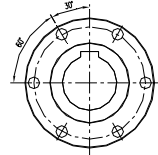
Seegerring
Circlip DIN 472



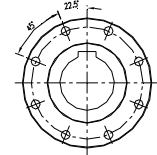
FL-01 / 4x



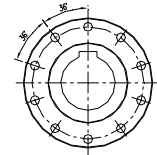
FL-02 / 6x



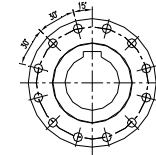
FL-03 / 8x



FL-04 / 10x



FL-05 / 12x



() = L1 Central + Cap Version * = meist gebräuchte Länge L1 most used length L1
** = Details Nabe + G1 siehe Seite 44-45 details sleeve + G1 see page 44-45

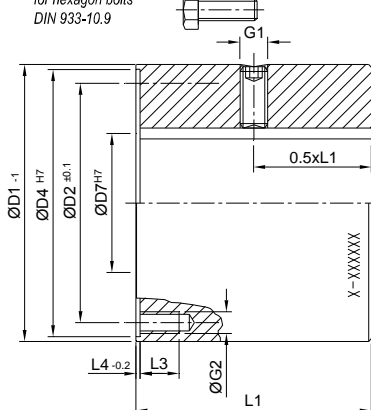
ØD1 mm	L1 mm	L1* mm	ØD7** mm	ØD2 mm	ØD4 mm	L3 mm	L4 mm	L8 mm	L9 mm	ØD8 mm	Ver sion	G2	Flansch flange	Schrauben bolts	
														Maß size	Mt Nm
58	20-65 (35-65)	30	10-27	47	30	20	1.4	15	5	26	A	M5	FL-01 (4)	M5x15	9
		50	28-37		40					36					
65	20-75 (35-75)	40	10-32	52	35	25	1.6	15	5	31	A	M6	FL-01 (4)	M6x20	14
		55	33-40		44					40					
75	20-85 (35-85)	42	10-38	62	42	25	1.9	15	5	37	A	M6	FL-02 (6)	M6x20	14
		60	39-50		54					49					
90	25-95 (45-95)	50	10-43	74.5	47	25	2.3	20	5	42	A	M8	FL-01 (4)	M8x20	35
		75	44-60		64					59					
100	25-110 (45-110)	62	20-51	84	57	25	2.3	20	5	49	A	M8	FL-02 (6)	M8x20	35
		80	52-68		74					69					
120	25-130 (45-130)	70	26-69	101.5	75	25	2.3	20	8	69	A	M8 M10	FL-03 (8)	M8x20	35
		100	70-82		88					82				B	M10x25
150	35-170 (55-170)	100	41-82	130	90	25	2.8	20	8	82	A	M10 M12 M16	FL-03 (8) FL-04 (10) FL-05 (12)	M10x25	70
		130	83-106		114	105				B				M12x25	120
180	50-205 (75-205)	120	41-100	155.5	110	30	2.8	25	10	99	B	M12 M14 M16	FL-03 (8) FL-04 (10) FL-05 (12)	M12x25	120
		150	102-125		135	124				M14x35				190	
225	60-250 (90-250)	150	50-130	196	140	35	4.5	30	12	128	B	M16	FL-03 (8) FL-05 (12)	M12x25	120
			132-165		175					162				M16x35	300
250	70-285 (105-285)	170	50-130	218	140	35	5	35	15	128	B	M18	FL-03 (8)	M18x40	450
		240	132-186		196					184					
285	80-320 (120-320)	180	60-165	245	175	45	5	40	20	160	B	M20	FL-03 (8)	M20x50	600
		280	166-210		220					205					
315	90-350 (130-350)	200	70-165	280	175	45	5	40	30	160	B	M22	FL-03 (8)	M22x50	800
		320	166-244		254					238					
350	100-390 (140-390)	250	80-200	310	220	45	6	40	30	198	B	M22	FL-04 (10)	M22x50	800
		350	202-260		284					258					
390	120-440 (160-440)	300	90-230	345	250	50	6	50	40	226	B	M24	FL-04 (10)	M24x60	1000
		400	232-300		320					296					
435	140-590 (180-590)	350	100-260	385	280	50	7	50	40	256	B	M27	FL-04 (10)	M27x70	1500
		500	262-336		356					332					



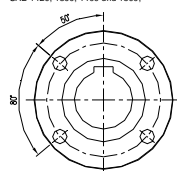
SAE Compact

Version A

Für Sechskantschrauben DIN 933-10.9
for hexagon bolts
DIN 933-10.9

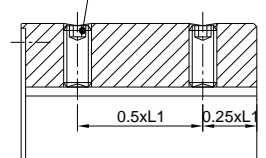


FL-11 / 4x
SAE 1120, 1300, 1400 und 1500.



Version B

Gewindestift mit Innensechskant
Allen set screw
DIN 916

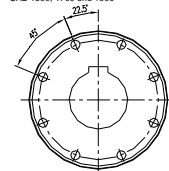


XXXXXX-X
ID Markierung einschließlich aller Kunden ID Daten
ID marking including all customer data

Material: C45

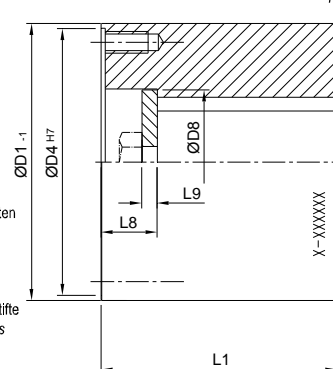
Alle Anschlussflansche einschließlich Gewindestifte
All companion flanges including Allen key screws

FL-12 / 8x
SAE 1690, 1700 und 1900

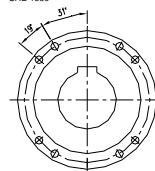


SAE Central

Für Sechskantschrauben DIN 933-10.9
for hexagon bolts
DIN 933-10.9

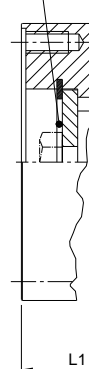


FL-13 / 8x
SAE 1880

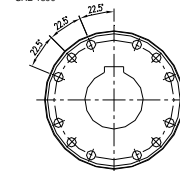


SAE Cap

Seegerring
Circlip DIN 472



FL-14 / 12x
SAE 1900



() = L1 Central + Cap Version * = meist gebrauchte Länge L1 most used length L1
** = Details Nabe + G1 siehe Seite 44-45 details sleeve + G1 see page 44-45

ØD1 mm	L1 mm	L1* mm	ØD7** mm	ØD2 mm	ØD4 mm	L3 mm	L4 mm	L8 mm	L9 mm	ØD8 mm	Ver sion	G2 mm	Flansch flange	Schrauben bolts	
														Maß size	Mt Nm
90 1100	25-75 (45-75)	50	10-35	69.85	57.15	20	2	20	5	50	A	M8	FL-11 (4)	M8x20	35
		55	36-50								B			5/16"x 3/4"	
96 1300	25-90 (45-90)	62	20-38	79.40	60.32	25	2	20	5	62	A	M10 3/8"	FL-11 (4)	M10x25	70
		62	39-54								B			3/8"x1"	
116 1400	25-110 (45-110)	70	26-50	95.25	69.85	25	2	20	8	75.8	A	M12 7/16"	FL-11 (4)	M12x25	120
		85	51-64								B			7/16"x1"	
150 1500	35-150 (55-150)	100	41-65	120.65	95.25	35	2	20	8	98.2	A	M14 1/2"	FL-01 (4)	M14x35	190
		115	66-88								B			1/2"x1 3/8"	
175 1600	50-180 (75-180)	120	41-140	155.52	168.23	25	1.2	25	10	138	B	M10 3/8"	FL-12 (8)	M10x25 3/8"x1"	70
203 1700 1800	60-220 (85-220)	150	50-175	184.15	196.82	25	1.2	25	12	166.7	B	M12 7/16"	FL-12 (8) FL-14 (12)	M12x25 7/16"x1"	120
245 1880	70-250 (105-250)	170	50-168	209.55	177.8	35	1.2	35	15	185.2	B	M16	FL-13 (8)	M16x35	300
250 1900 GS	70-250 (105-250)	170	50-186	228.57	196.82	25	1.2	35	15	209	B	M12 7/16"	FL-14 (12)	M12x25 7/16"x1"	120
276 1900	80-280 (120-280)	180	60-190	247.64 (251.70)	222.22	35	1.2	40	20	171.4	B	M16	FL-12 (8)	M16x35	300