



Eckdaten basic data (Sonderausführungen auf Anfrage)

Maximaldrehmoment <i>Mtmax</i> Maximum torque <i>Mtmax</i>	450 Nm	Dauerwechsel Drehmoment Alternating torque	260 Nm
Grenzdrehmoment <i>Mtgrenz</i> Limit torque <i>Mtgrenz</i>	650 Nm	Drehzahl Revolution	1-3000 U/min (rpm)
Betriebstemperatur Operational temperature	-30°C - +120°C		
Rotationsdurchmesser Diameter of rotation	Ø59 mm (D5)		
Rohrdurchmesser Tube diameter	Ø 40x2 mm (D7)		

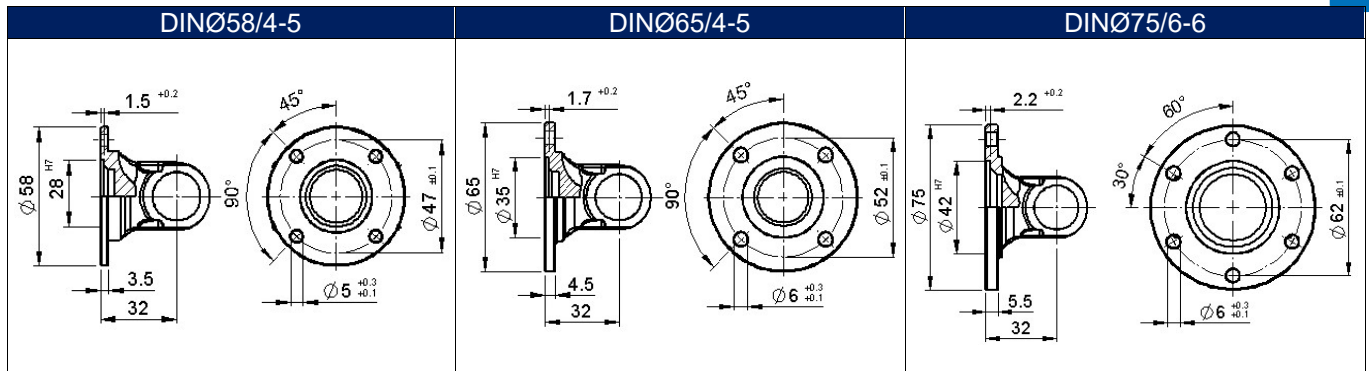
GW	500-009	
L1	min. 305mm	
LA	40mm 80mm	

GW	513-009	
L1	180-275mm	
LA	20-80mm	

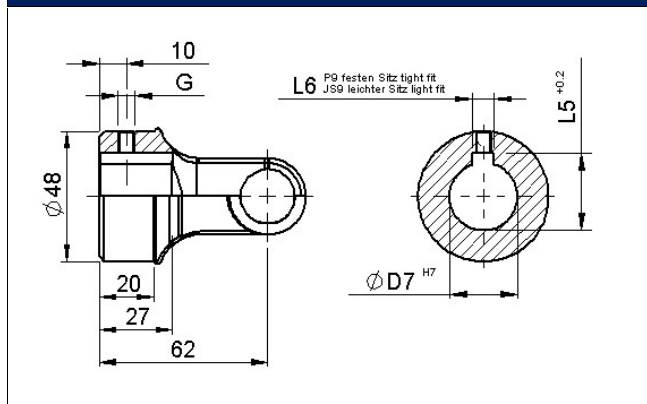
GW	511-009	
L1	min. 405 mm	
LA	150mm	

GW	505-009	
L1	min. 170mm	

GW	507-009		506-009	
L1	120mm		64mm	

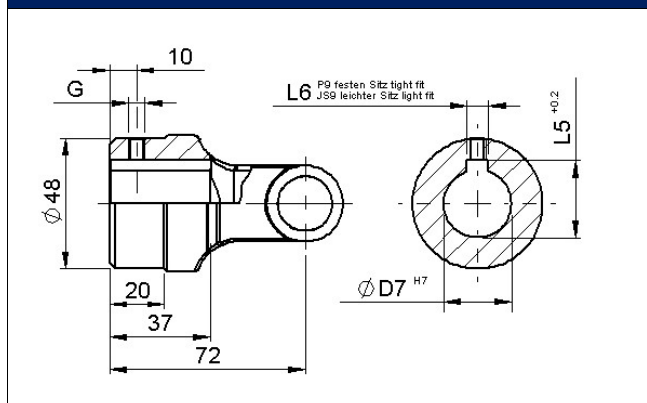


Naben sleeves L2 = 62



D7	L6	L5	G	D7	L6	L5	G
10	3	11.4	M3	21	6	23.8	M5
11	4	12.8	M3	22	6	24.8	M5
12	4	13.8	M3	23	8	26.3	M6
13	5	15.3	M4	24	8	27.3	M6
14	5	16.3	M4	25	8	28.3	M6
15	5	17.3	M4	26	8	29.3	M6
16	5	18.3	M4	27	8	30.3	M6
17	5	19.3	M4	28	8	31.3	M6
18	6	20.8	M5	29	8	32.3	M6
19	6	21.8	M5	30	8	33.3	M6
20	6	22.8	M5				

Naben sleeves L2 = 72



D7	L6	L5	G	D7	L6	L5	G
10	3	11.4	M3	21	6	23.8	M5
11	4	12.8	M3	22	6	24.8	M5
12	4	13.8	M3	23	8	26.3	M6
13	5	15.3	M4	24	8	27.3	M6
14	5	16.3	M4	25	8	28.3	M6
15	5	17.3	M4	26	8	29.3	M6
16	5	18.3	M4	27	8	30.3	M6
17	5	19.3	M4	28	8	31.3	M6
18	6	20.8	M5	29	8	32.3	M6
19	6	21.8	M5	30	8	33.3	M6
20	6	22.8	M5				