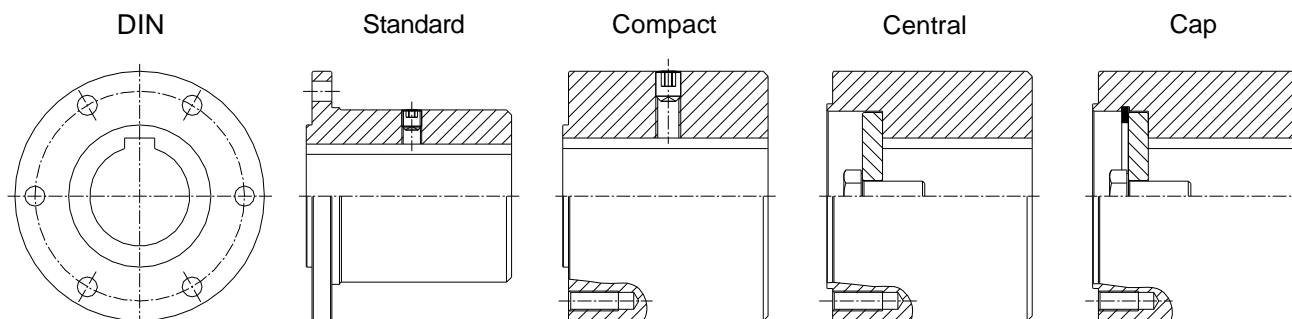
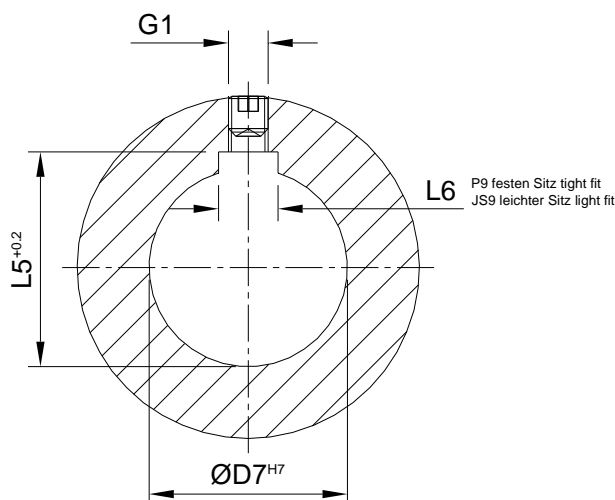


Typenübersicht *Range of types*



Maßliste Nabe mit Passfeder DIN 6885 *List of dimensions sleeve with key DIN 6885*



Nutenpassung wahlweise in P9 oder JS9 Passung
Nabenbohrung standardmäßig mit H7 Passung. Auf Wunsch jede andere Passung.

Bei fehlender Angaben über die Länge des Wellenstumpfes gilt nach den Regeln der Technik für die richtige Länge L1 des Anschlussflansches und unseren Erfahrungen: **$L1 = 1,55 \times \text{ØD7}$** . Wobei das Ergebnis dann auf eine Standard Zahl abgerundet wird. (0, 2, 4, 5, 6, 8).

Bei Anschlussflansche der Version B mit relativ großer Nabe kann Maß G eventuell entsprechend kleiner angelegt sein.

Key way fit optional with P9 or JS9. Sleeve hole standard fit H7. All other type of fits on request.

*If the length of the shaft is not specified following formula is necessary according the state of art and our know how for the length of L1: **$L1 = 1.55 \times \text{ØD7}$** . The result have to be rounded down to a standard number. (0, 2, 4, 5, 6, 8).*

For companion flange version B with a relative big sleeve, the size G eventually change to one of the smaller size.

Anschlussflansche Companion flanges

SASS

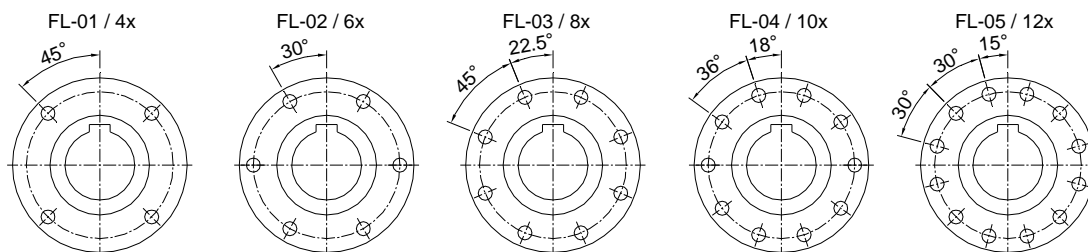
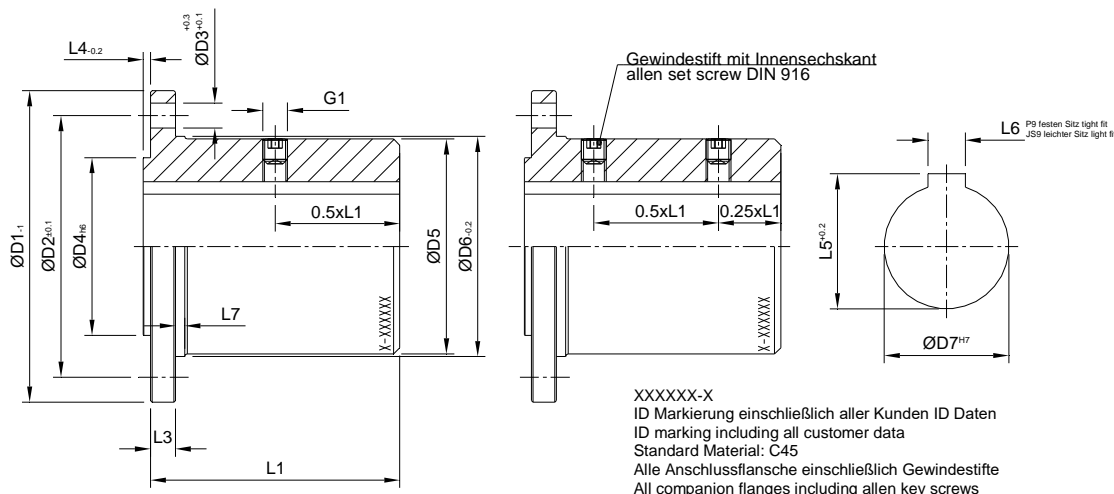


— seit 1935 —

DIN Standard

Version A

Version B



* = Details Nabe + G1 siehe Maßliste Nabe mit Passfeder
* = details sleeve + G1 see list of dimensions sleeve with key

ØD1 mm	minL1 mm	ØD7* mm	ØD2 mm	ØD4 mm	L3 mm	L4 mm	L7 mm	ØD5 mm	ØD6 mm	Ver sion	ØD3 mm	Flansch flange	Schrauben bolts	
													Maß size	Mt Nm
58	22 44	10-20	47	30	4	1.4	3	38	38.8	A B	Ø5	FL-01 (4)	M5x16	9
		21-24												
65	25 50	10-22	52	35	5	1.6	3	40	41.8	A B	Ø6	FL-01 (4)	M6x20	14
		23-26												
75	30 60	10-30	62	42	6	1.9	3	50	51.8	A B	Ø6	FL-02 (6)	M6x20	14
		31-34												
90	30 70	15-36	74.5	47	8	2.3	3	59	61.2	A B	Ø8	FL-01 (4)	M8x1x25	36
		37-40												
100	35 70	20-42	84	57	8	2.3	3	69	70.7	A B	Ø8	FL-02 (6)	M8x1x25	36
		43-50												
120	45 90	25-50	101.5	75	10	2.3	5	82	84.1	A B	Ø8 Ø10	FL-03 (8)	M8x1x30	36
		51-60											M10x1x30	70
150	55 110	40-65	130	90	12	2.8	5	108 Ø14: 105	110.6 Ø14: 107.8	A B	Ø10 Ø12 Ø14	FL-03 (8)	M10x1x35	70
		66-75											M12x1.5x40	120
180	65 130	40-90	155.5	110	14	2.8	5	128	131	A B	Ø12 Ø14 Ø16	FL-03 (8)	M12x1.5x45	120
		FL-04 (10)										M14x1.5x45	190	
225	70 140	50-125	196	140	15	4.5	5	168	171.4	A B	Ø12 Ø16	FL-03 (8)	M12x1.5x50	120
		FL-05 (12)										M16x1.5x50	300	
250	80 160	50-130	218	140	18	5	7	186	190	B	Ø18	FL-03 (8)	M18x1.5x60	450
285	85 170	60-150	245	175	20	5	7	210	214.5	B	Ø20	FL-03 (8)	M20x1.5x65	620
315	90 180	70-165	280	175	22	5	7	244	247.5	B	Ø22	FL-03 (8)	M22x1.5x70	830
350	95 190	80-200	310	220	25	6	7	274	277.5	B	Ø22	FL-04 (10)	M22x1.5x80	830
390	105 200	90-230	345	250	28	6	7	304	308	B	Ø24	FL-04 (10)	M24x1.5x85	1100
435	120 220	100-260	385	280	32	7	7	338	343	B	Ø27	FL-04 (10)	M27x1.5x95	1600

Stand 06-2024

Alle Rechte vorbehalten, kopieren nur mit Genehmigung der Wilhelm Sass KG
Copyright by Wilhelm Sass KG

Anschlussflansche Companion flanges

SASS

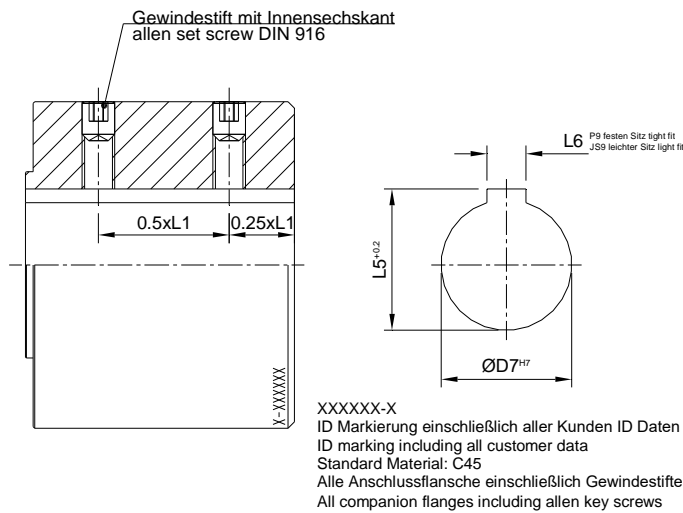
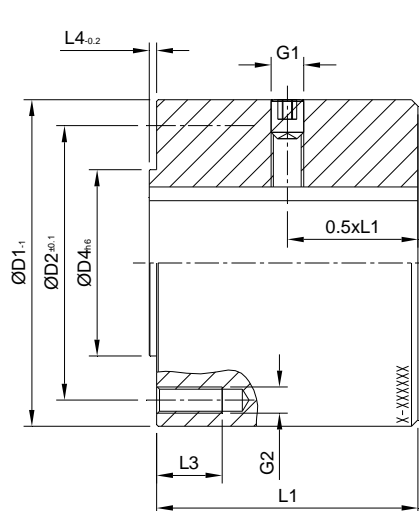


— seit 1935 —

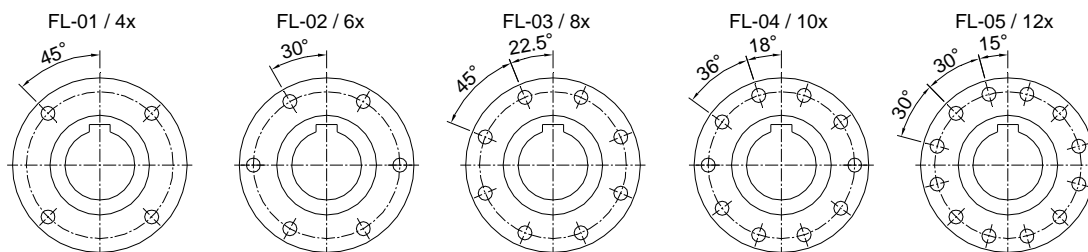
DIN Compact

Version A

Version B



XXXXXX-X
ID Markierung einschließlich aller Kunden ID Daten
ID marking including all customer data
Standard Material: C45
Alle Anschlussflansche einschließlich Gewindestifte
All companion flanges including allen key screws



* = Details Nabe + G1 siehe Maßliste Nabe mit Passfeder
* = details sleeve + G1 see list of dimensions sleeve with key

ØD1 mm	L1 mm	ØD7* mm	ØD2 Mm	ØD4 mm	L3 mm	L4 mm	Ver sion	G2	Flansch flange	Schrauben bolts	
										Maß Size	Mt Nm
58	20-65	10-27	47	30	15	1.4	A	M5	FL-01 (4)	M5x16	9
		28-37		40							
65	20-75	10-32	52	35	15	1.6	A	M6	FL-01 (4)	M6x16	14
		33-40		44							
75	20-85	10-38	62	42	15	1.9	A	M6	FL-02 (6)	M6x16	14
		39-50		54							
90	25-95	10-43	74.5	47	20	2.3	A	M8	FL-01 (4)	M8x20	35
		44-60		64							
100	25-110	20-51	84	57	20	2.3	A	M8	FL-02 (6)	M8x20	35
		52-68		74							
120	25-130	26-69	101.5	75	20	2.3	A	M8	FL-03 (8)	M8x20	35
		70-82		88						M10x25	70
150	35-170	40-82	130	90	25	2.8	A	M10	FL-03 (8)	M10x25	70
		83-106		114						M12x25	120
180	50-205	50-100	155.5	110	30	2.8	B	M12	FL-03 (8)	M12x25	120
		101-125		135					M14x35	190	
225	60-250	60-130	196	140	35	4.5	B	M12	FL-03 (8)	M12x25	120
		131-165		175					M16x35	300	
250	70-285	60-130	218	140	35	5	B	M18	FL-03 (8)	M18x40	450
		131-186		196							
285	80-320	70-165	245	175	45	5	B	M20	FL-03 (8)	M20x50	600
		166-210		220							
315	90-350	70-165	280	175	45	5	B	M22	FL-03 (8)	M22x50	800
		166-244		254							
350	100-390	80-200	310	220	45	6	B	M22	FL-04 (10)	M22x50	800
		201-260		284							
390	120-440	80-230	345	250	50	6	B	M24	FL-04 (10)	M24x60	1000
		231-300		320							
435	140-590	80-260	385	280	50	7	B	M27	FL-04 (10)	M27x70	1500
		261-336		356							

Stand 06-2024

Alle Rechte vorbehalten, kopieren nur mit Genehmigung der Wilhelm Sass KG
Copyright by Wilhelm Sass KG

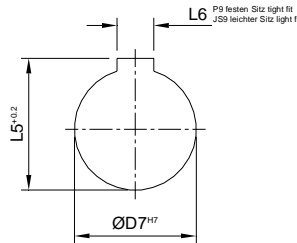
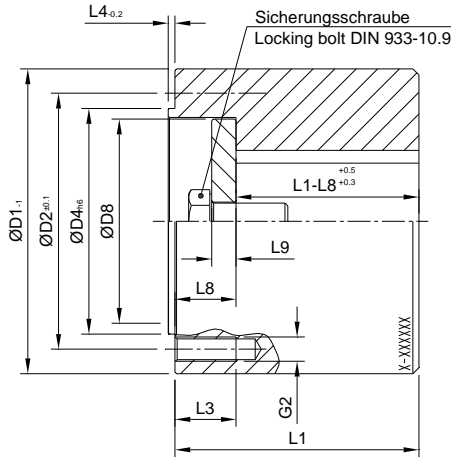
Anschlussflansche Companion flanges

SASS

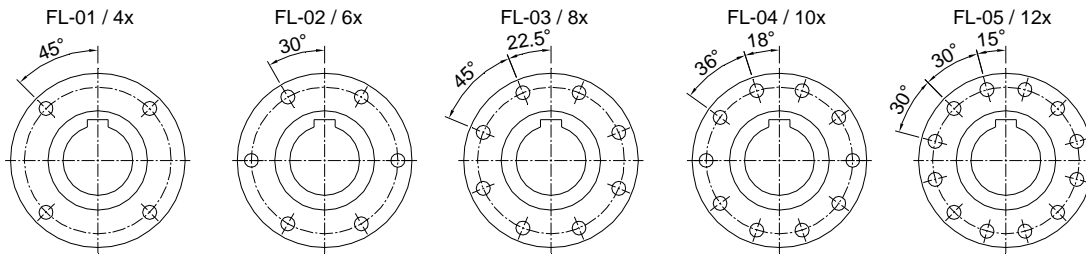


— seit 1935 —

DIN Central



XXXXXX-X
ID Markierung einschließlich aller Kunden ID Daten
ID marking including all customer data
Standard Material: C45
Alle Anschlussflansche einschließlich allen key screws
All companion flanges including allen key screws



* = Details Nabe siehe Maßliste Nabe mit Passfeder
* = details sleeve see list of dimensions sleeve with key

ØD1 mm	L1 mm	ØD7* mm	ØD2 Mm	ØD4 mm	L3 mm	L4 mm	L8 mm	L9 mm	ØD8 mm	G2	Flansch flange	Schrauben bolts	
												Maß Size	Mt Nm
58	35-65	10-18	47	30	15	1.4	15	5	26	M5	FL-01 (4)	M5x16	9
		10-28		40					36				
65	35-75	10-24	52	35	15	1.6	15	5	32	M6	FL-01 (4)	M6x16	14
		10-32		44					40				
75	35-85	10-30	62	42	15	1.9	15	5	38	M6	FL-02 (6)	M6x16	14
		10-42		54					50				
90	45-95	10-34	74.5	47	20	2.3	20	5	42	M8	FL-01 (4)	M8x20	35
		10-50		64					60				
100	45-110	20-42	84	57	20	2.3	20	5	50	M8	FL-02 (6)	M8x20	35
		20-60		74				8	68				
120	45-130	20-60	101.5	75	20	2.3	20	8	68	M8 M10	FL-03 (8)	M8x20	35
		20-74		88					82			M10x25	70
150	55-170	30-74	130	90	25	2.8	20	8	82	M10 M12 M14	FL-03 (8)	M10x25	70
		30-95		114					105			M12x25	120
180	75-205	40-92	155.5	110	25	2.8	25	10	100	M12 M14 M16	FL-03 (8) FL-04 (10) FL-05 (12)	M14x35	190
		40-115		135					125			M16x35	300
225	90-250	50-115	196	140	30	4.5	25	10	125	M16	FL-03 (8) FL-04 (10) FL-05 (12)	M16x35	300
		50-150		175					160				
250	105-285	50-117	218	140	35	5	25	10	125	M18	FL-03 (8)	M18x40	450
		50-170		196					180				
285	120-320	60-150	245	175	45	5	30	12	160	M20	FL-03 (8)	M20x50	600
		60-190		220					205				
315	130-350	70-150	280	175	45	5	30	12	160	M22	FL-03 (8)	M22x50	800
		70-220		254					235				
350	140-390	80-185	310	220	45	6	40	20	195	M22	FL-04 (10)	M22x50	800
		80-240		284					255				
390	160-440	90-215	345	250	50	6	40	20	225	M24	FL-04 (10)	M24x60	1000
		90-280		320					295				
435	180-590	100-245	385	280	50	7	40	20	255	M27	FL-04 (10)	M27x70	1500
		100-310		356					330				

Stand 06-2024

Alle Rechte vorbehalten, kopieren nur mit Genehmigung der Wilhelm SASS KG
Copyright by Wilhelm SASS KG

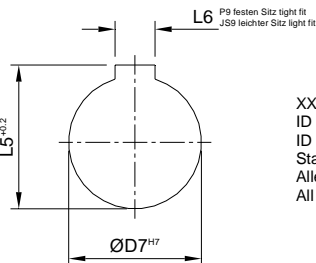
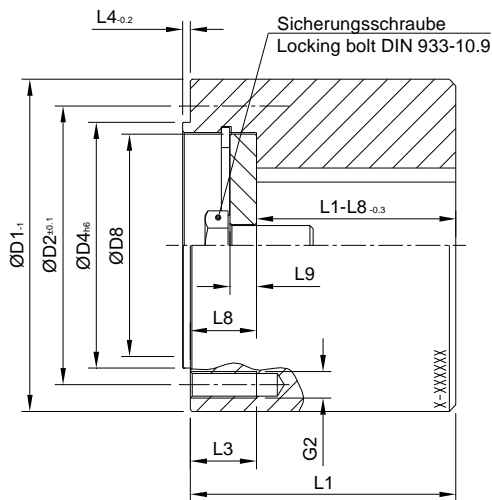
Anschlussflansche Companion flanges

SASS

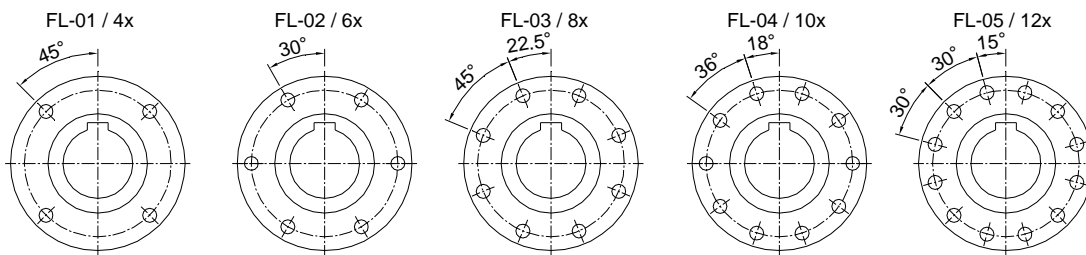


— seit 1935 —

DIN Cap



XXXXXX-X
ID Markierung einschließlich aller Kunden ID Daten
ID marking including all customer data
Standard Material: C45
Alle Anschlussflansche einschließlich Gewindestifte
All companion flanges including allen key screws



* = Details Nabe siehe Maßliste Nabe mit Passfeder
* = details sleeve see list of dimensions sleeve with key

ØD1 mm	L1 mm	ØD7* mm	ØD2 Mm	ØD4 mm	L3 mm	L4 mm	L8 mm	L9 mm	ØD8 mm	G2	Flansch flange	Schrauben bolts	
												Maß Size	Mt Nm
58	35-65	10-18	47	30	15	1.4	15	5	26	M5	FL-01 (4)	M5x16	9
		10-28		40					36				
65	35-75	10-24	52	35	15	1.6	15	5	32	M6	FL-01 (4)	M6x16	14
		10-32		44					40				
75	35-85	10-30	62	42	15	1.9	15	5	38	M6	FL-02 (6)	M6x16	14
		10-42		54					50				
90	45-95	10-34	74.5	47	20	2.3	20	5	42	M8	FL-01 (4)	M8x20	35
		10-50		64					60				
100	45-110	20-42	84	57	20	2.3	20	5	50	M8	FL-02 (6)	M8x20	35
		20-60		74					68				
120	45-130	20-60	101.5	75	20	2.3	20	8	68	M8 M10	FL-03 (8)	M8x20	35
		20-74		88					82			M10x25	70
150	55-170	30-74	130	90	25	2.8	20	8	82	M10 M12 M14	FL-03 (8)	M10x25	70
		30-95		114					105			M12x25	120
180	75-205	40-92	155.5	110	25	2.8	25	10	100	M12 M14 M16	FL-03 (8)	M12x25	120
		40-115		135					125		FL-04 (10)	M14x35	190
225	90-250	50-115	196	140	25	4.5	25	10	125	M16	FL-03 (8)	M16x35	300
		50-150		175					160		FL-04 (10)		
250	105-285	50-117	218	140	35	5	25	10	125	M18	FL-03 (8)	M18x40	450
		50-170		196					180				
285	120-320	60-150	245	175	45	5	30	12	160	M20	FL-03 (8)	M20x50	600
		60-190		220					205				
315	130-350	70-150	280	175	45	5	30	12	160	M22	FL-03 (8)	M22x50	800
		70-220		254					235				
350	140-390	80-185	310	220	45	6	40	20	195	M22	FL-04 (10)	M22x50	800
		80-240		284					255				
390	160-440	90-215	345	250	50	6	40	20	225	M24	FL-04 (10)	M24x60	1000
		90-280		320					295				
435	180-590	100-245	385	280	50	7	40	20	255	M27	FL-04 (10)	M27x70	1500
		100-310		356					330				

Stand 06-2024

Alle Rechte vorbehalten, kopieren nur mit Genehmigung der Wilhelm Sass KG
Copyright by Wilhelm Sass KG